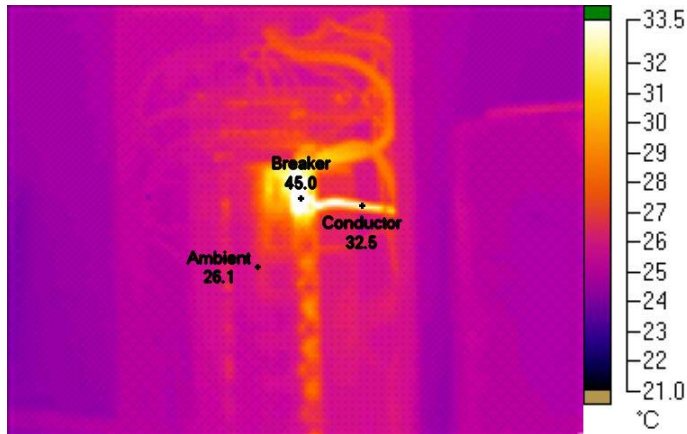


SAMPLE ELECTRICAL REPORT

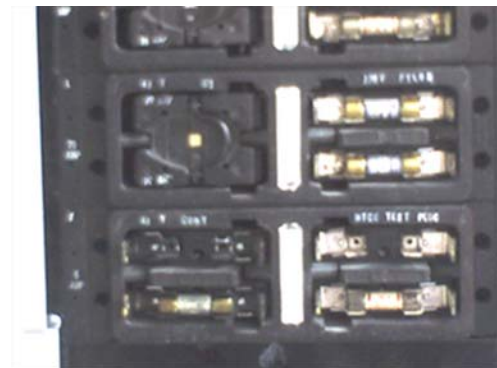
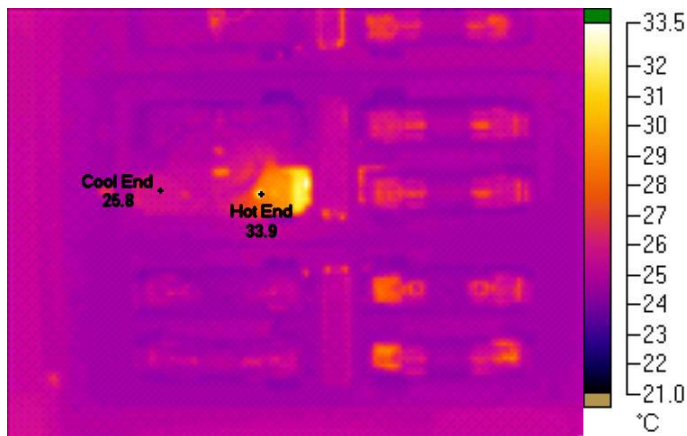


Visible Light Image

The breaker in this AC distribution panel is 19 C above other non-loaded breakers in the same panel. The load on the 20 amp breaker measured 17 amps. The conductor carrying the load is greater than 10C variance from similar conductors

Further investigation revealed that all building lights were on the same breaker. Some of the lights should be moved to a separate circuit.

Name	Temperature
Ambient	26.1°C
Breaker	45.0°C
Conductor	32.5°C



Visible Light Image

This older breaker panel (BullDog) has one tang of the fuse holder with a temperature of 8.1C over the other end of the fuse enclosure. We suspect the tang on the fuse enclosure is high resistance, but were unable to confirm this at the time of the inspection. The fuse holder should be removed when the equipment can be taken out of service and the tang cleaned and examined for damage or corrosion.

Name	Temperature
Hot End	33.9°C
Cool End	25.8°C